

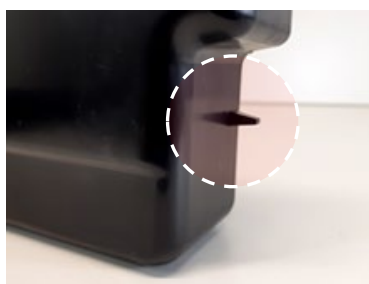


Sprso Giro Troubleshooting

Error	Display message [ME04 Place drip tray and waste tray] remains visible .
Action	Check if the waste tray / drip tray is present and correctly inserted. If necessary, Clean the machine interior with a brush/cloth or vacuum cleaner.
Remark	<p>Coffee grounds may have fallen onto the base of the machine (This may for instance happen when the drip/waste tray was taken out before the coffee brewing cycle was completely finished).</p> <p>Please wait until the brewing cycle is completed (3-5 seconds after a drink has been dispensed) when display message [ME05 Empty waste tray] appears.</p>



Check if the waste tray is present, and correctly placed.



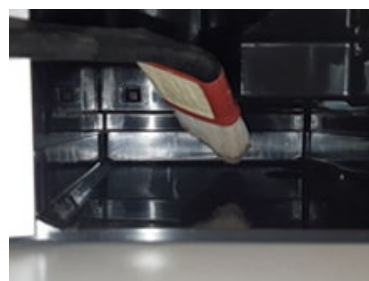
Check if the tab on the backside of the tray is not damaged. In case of damage, please contact the helpdesk of your service provider for a replacement part.



Can the drip tray be completely inserted into the machine?



It is possible that the drip tray cannot be pushed completely into the machine due to coffee ground residues on the bottom plate.



Are there coffee residues present on the bottom plate? (specifically in the rear side corners). Clean the interior with a brush, cloth or vacuum cleaner.



Do you have any questions or does the problem persist? Please contact the helpdesk of your local service organization.