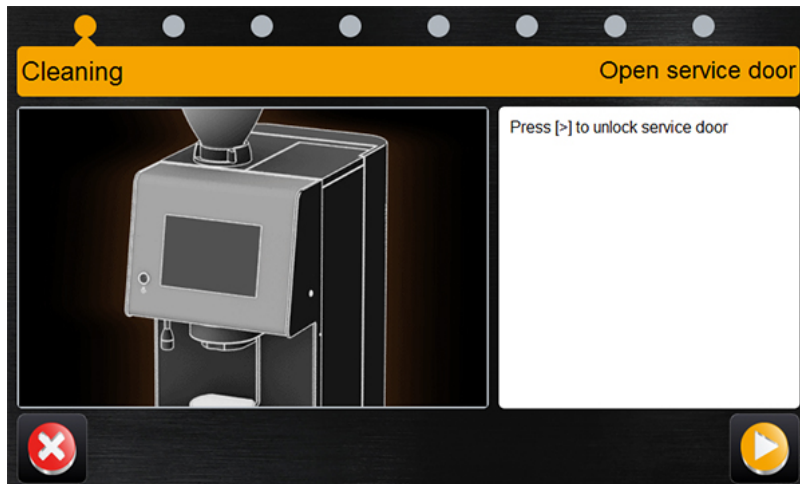
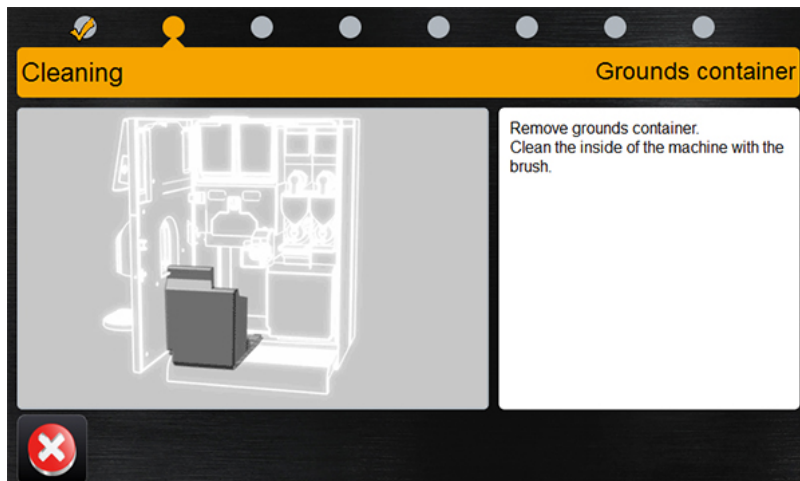


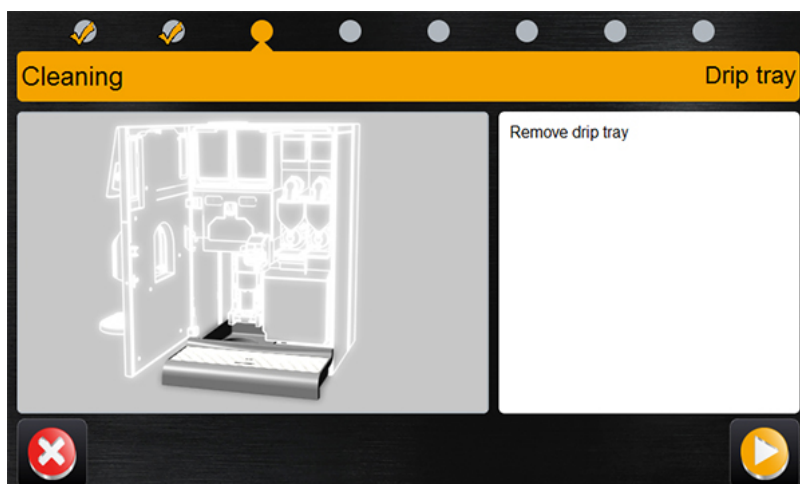
Cleaning Scheduele – Barista ONE



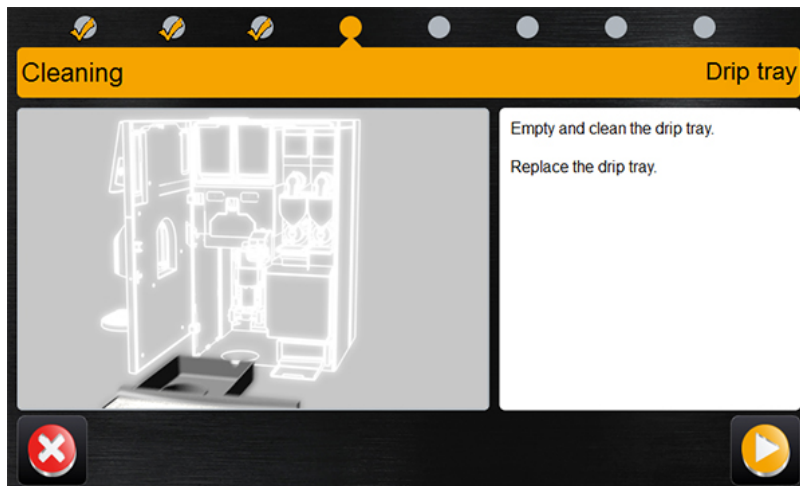
Open the front door.



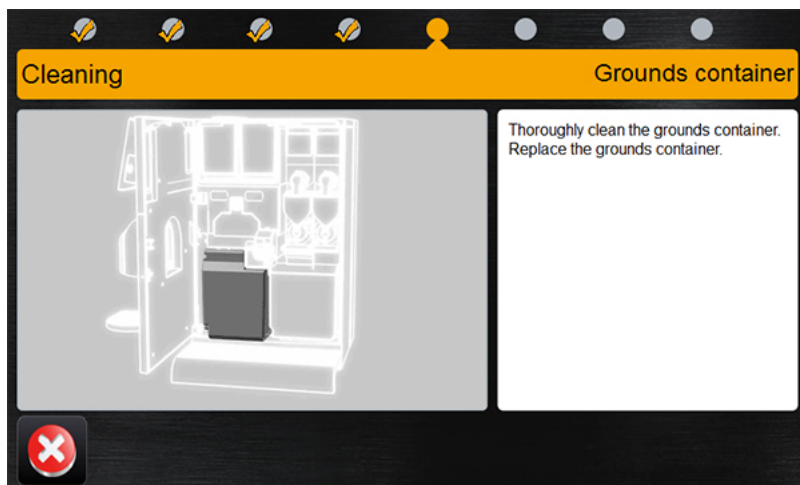
Remove the grounds container and clean the machine inside with a brush.



Remove the drip tray



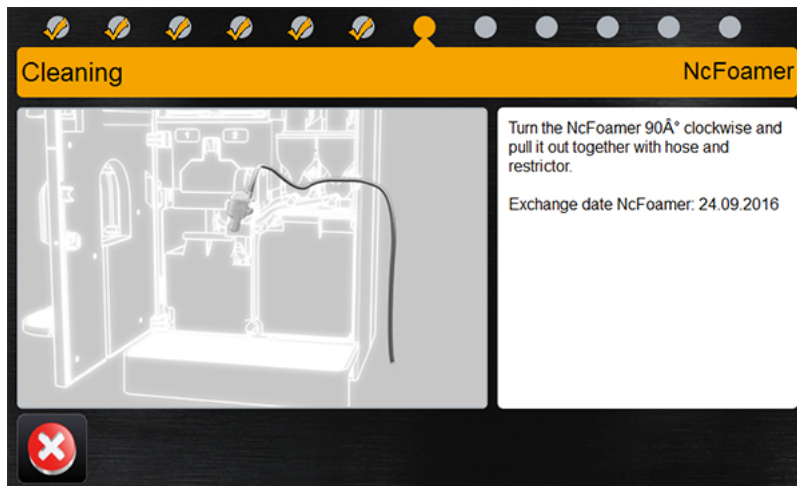
Empty the drip tray and replace it.



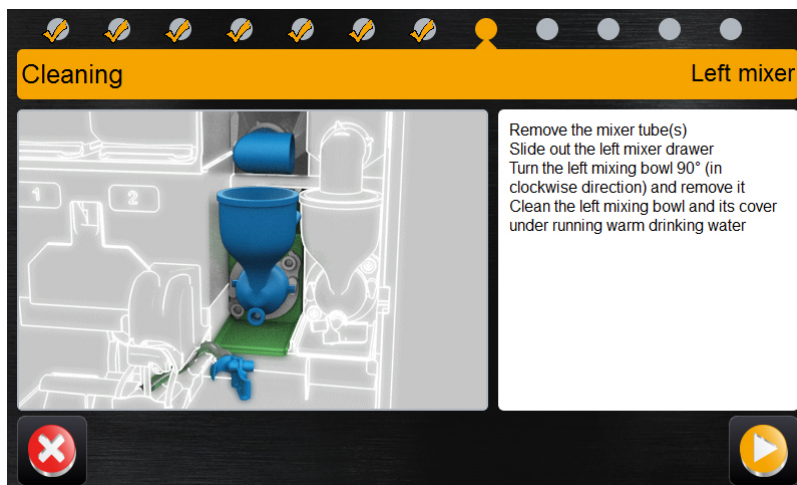
Clean the grounds container and replace it in the machine.



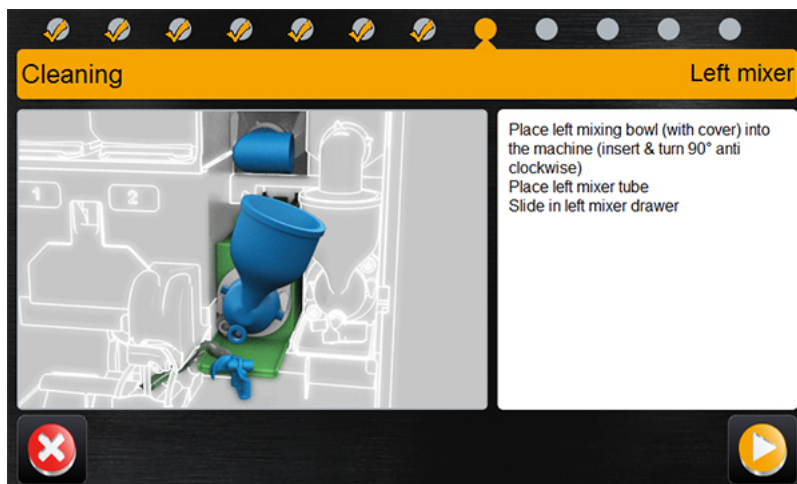
Insert the cleaning tablet and press -> to continue.



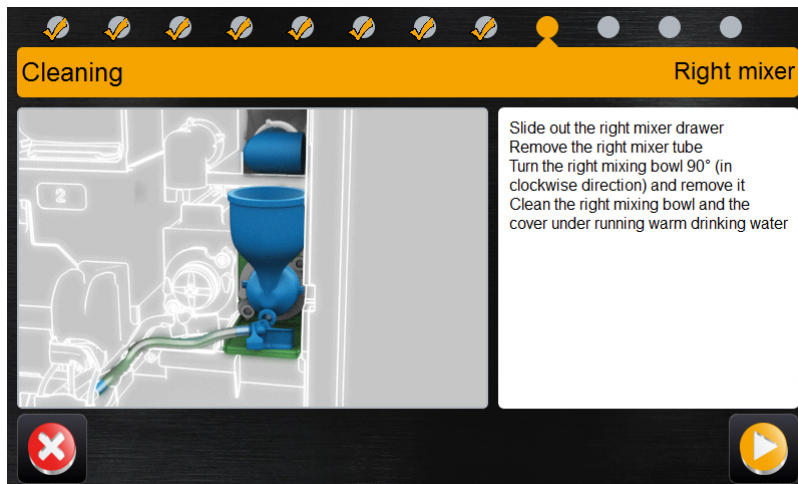
Turn the Ncfoamer 90° clockwise and remove it together with the hose.



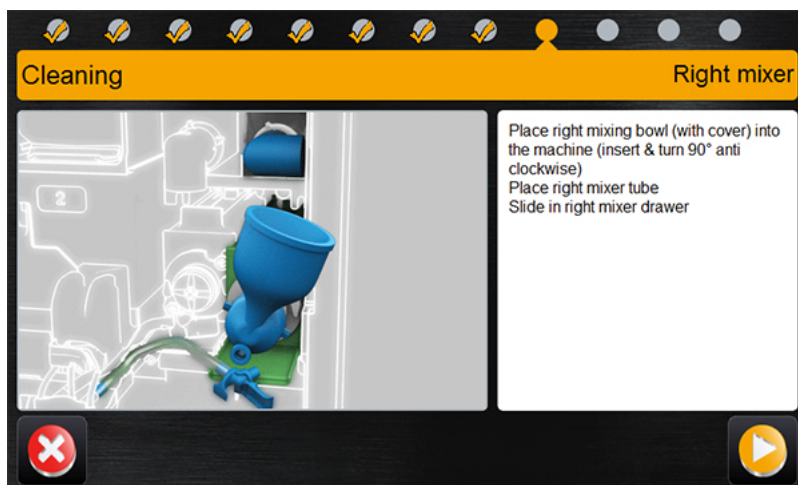
Remove mixer tubes
Slide out the mixer drawer and remove the mixer.
Clean the bowl.



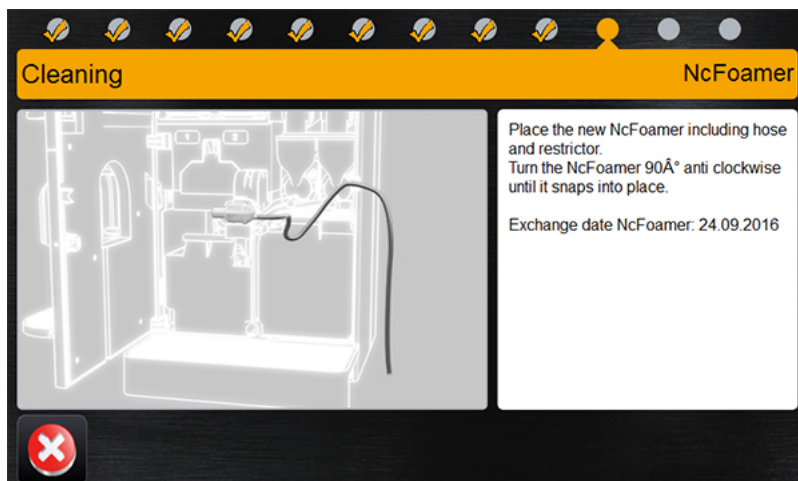
Put the mixer back in.



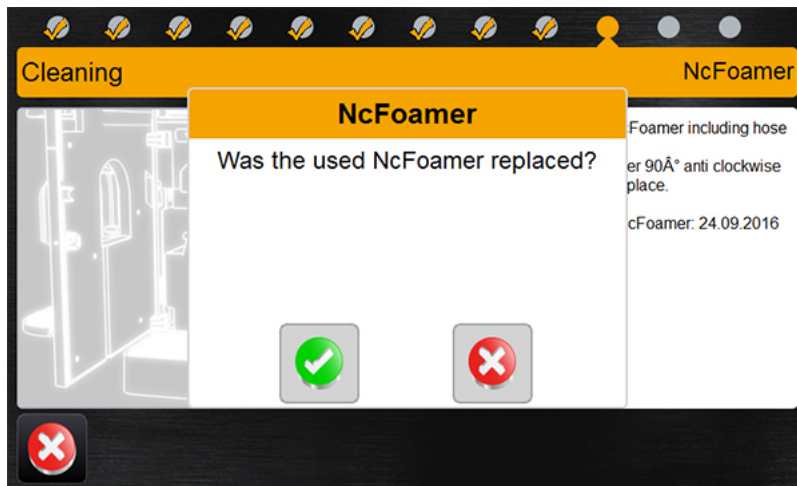
Repeat the steps above on the right side.



Put the mixer back in.



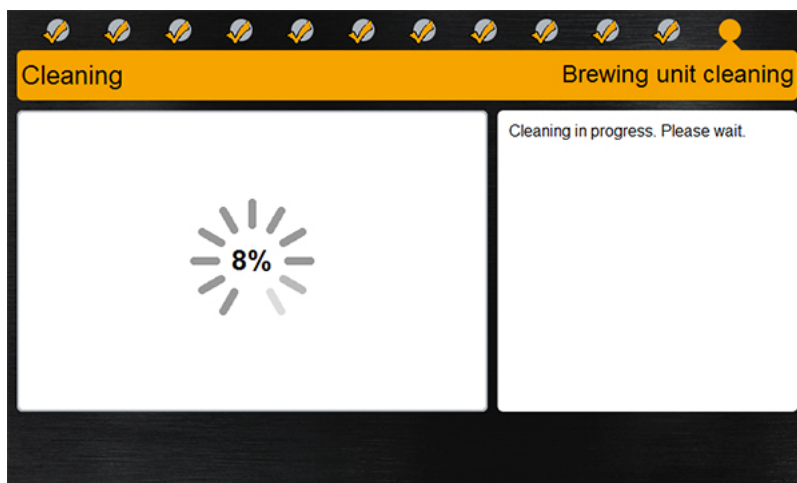
Place the new Ncfoamer.



Confirm replacing the Ncfoamer.



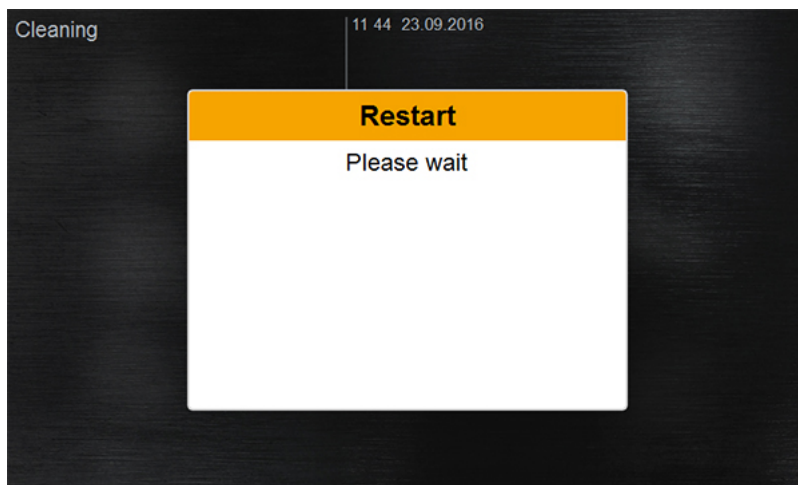
Close the door.



The automatic cleaning starts



Enable/Disable Milk system after the cleaning.



Machine automatically restarts.