

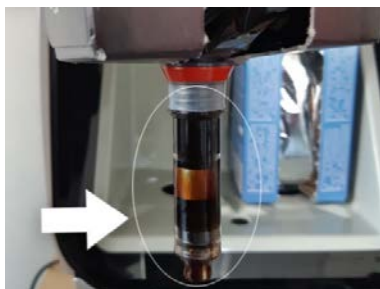


Problem: The coffee is not strong enough anymore (after replacing a coffee pack)

Action: Check if the coffee pack is correctly opened, and the dosing spout does function correctly.

You can also view on YouTube how to handle Cafitesse Coffee Packs (link to be inserted)

N.B. If you want to change the coffee strength of a drink or more drinks, you can do so in the operator programming mode.



Check if the dosing pout of the coffee pack is filled with coffee.



Shake the coffee pack well (about 10 times).

REMARK: Put a paper towel over the spout to prevent that coffee spatters around..

Is the coffee strength still poor?
Please replace the pack for another coffee pack. It is likely after the previous check that the dosing spout is not properly functioning.



Please contact the helpdesk of your reseller or local service organisation to report the complaint.



Please store the pack, as the production details are important to process the complaint.